

# UFO LED Highbay Light BRIGHTEN YOUR LIFE

NEW LED TECHNOLOGY THAT ALLOWS THE  
COEXISTENCE OF ENVIRONMENTAL  
PROTECTION AND ENERGY SAVING

## Benefits

1. Replace conventional Highbay Lights.
2. Precision Die Cast Aluminum Housing.
3. Fade Resistant Powder Coat Finish.
4. Easy Installation.
5. CE ROHS listed.
6. With a microwave sensor in the middle of the lamp.



Intertek  
4010207



BB-GKD-XXX-E3

Optional



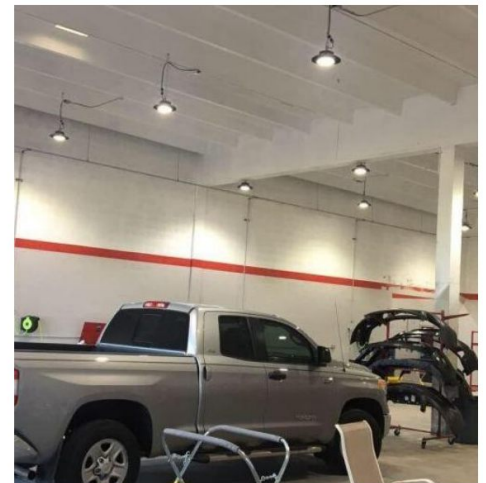
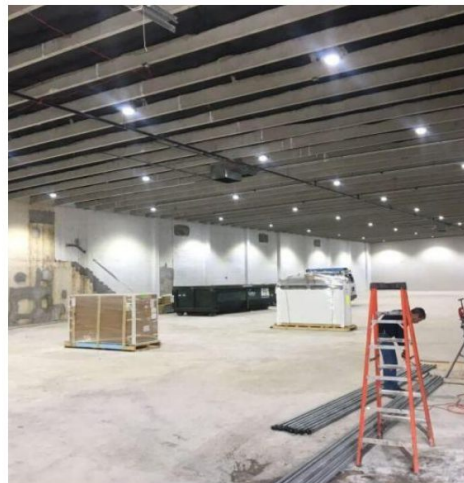
## Features

1. Beam angle:60 90 120 degrees.
2. Aluminum die-casting heat sinks is good for heat dissipation.
3. It's major to replace the conventiona highbay light.
4. Green, energy saving, long and reliable life of 50,000 hours.
5. No RF interference, No IR/UV radiation ,no mercury pollution.
6. Wide colour availability in degrees Kelvin(K),2700-6700K.
7. Streamline exterior design, beautiful appearance.
8. Environment friendly ,energy saving (70~80%).
9. Special circuit design, each LED work separately, avoiding the single broken LED influence problem.



## Application

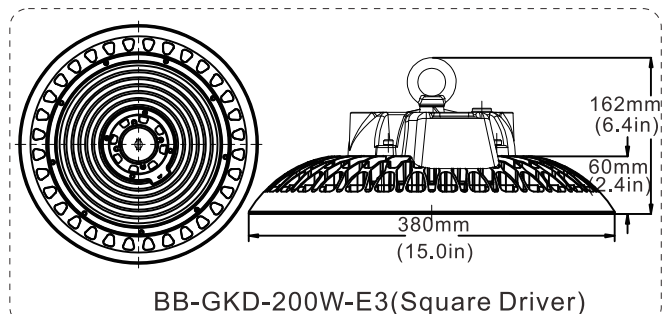
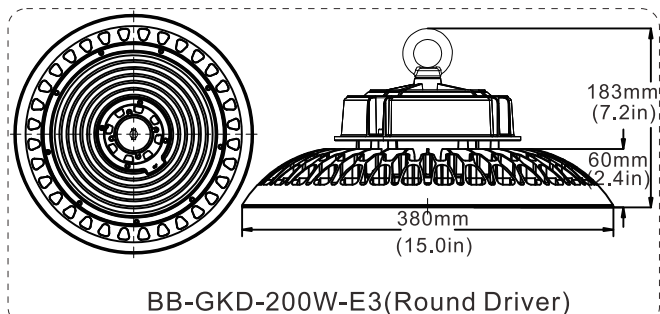
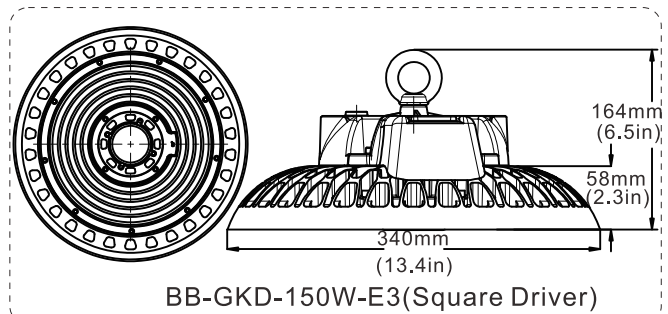
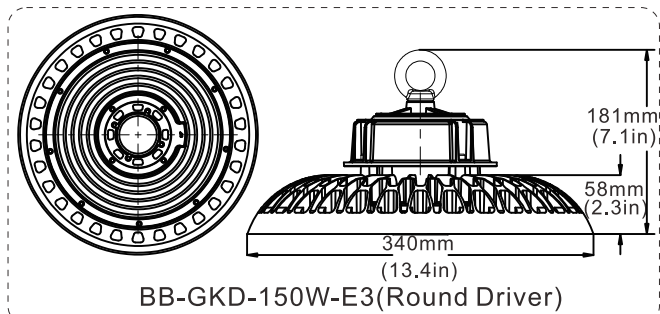
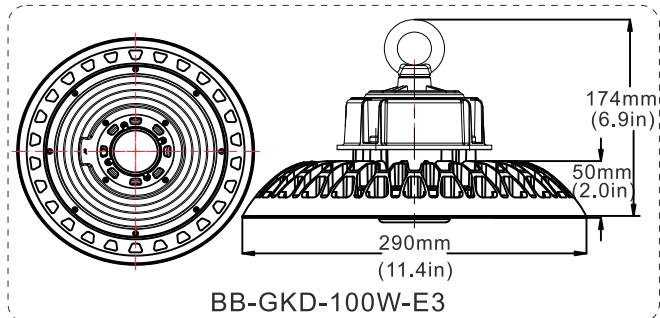
1. Parking areas Lighting.
2. Ceiling Lighting.
3. Warehouse Lighting.
4. High/Low Bay Lighting.



# SPECIFICATIONS

Power	100W	150W	200W
Model	BB-GKD-100W-E3	BB-GKD-150W-E3	BB-GKD-200W-E3
Luminous Flux	17000lm	25500lm	34000lm
Replacement	HPS 300W	HPS 400W	HPS 600W
Model differences	Different installation accessories:A-Ring mounting;B-Bracket mounting		
Light Source	SMD LED		
Luminous Efficacy	170lm/w;190lm/w optional		
Operation Temp.	-40 to +45°C		
CCT	2700K SW / 3000K WW / 4100K NW / 5000K DW / 5700K CW		
CRI	70+		
Life Span	50,000 hours at 25°C		
Voltage	100-277VAC/50-60HZ ; 200-480VAC/50-60Hz Available		
Driver	UL listed power supply		
Dimming	Dimmable Dali dimming optional		
Sensor	Default: Microwave sensor; EMERGENCY BACK UP available.		
Default Function	100% sensing distance;Light brightness 50LUX;Hold time 30 seconds;Wait brightness 20%; Waiting time is 15 minutes.		
Remote control	Optional		
Control System	APP, remote control, touch screen, light control and other control options available		
Beam Angle	Default 90° ;60° 120° optional		
Cover	Lens cover:60° 90° ; Flat cover:120°		
IP	65		
PF	>0.95		
Warranty	5Years		

# DIMENSIONAL DRAWING



# SMART CONTROL DIAGRAMMATIZE

Free to change

- ▶ Microwave sensor
- ▶ PIR sensor
- ▶ CCT&Power Adjust



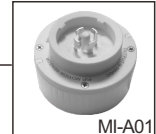
3 types of Sensor Head Options

Type A

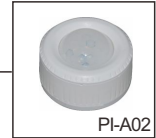


Microwave sensor  
PIR sensor

Free to change



MI-A01

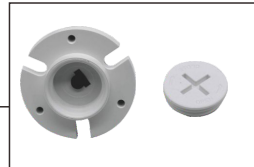


PI-A02



Remote controller

Type B



Microwave sensor  
PIR sensor

Free to change



MI-B01



PI-B02



APP control

Type C



Microwave sensor  
PIR sensor

Free to change

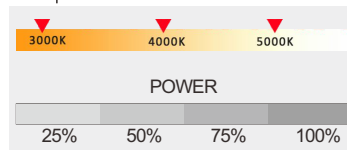


MI-C01



PI-C02

CCT&Power Adjust

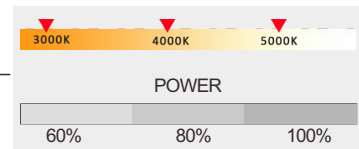


Type D

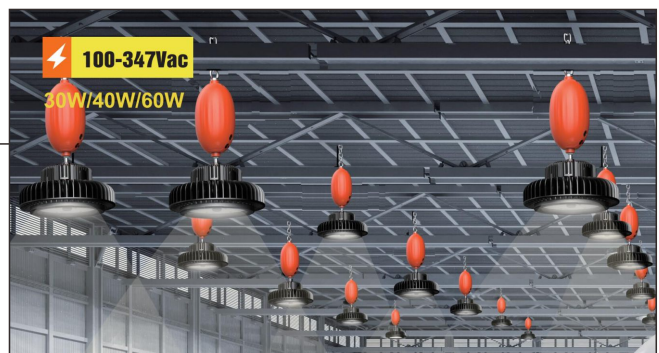


Power supply

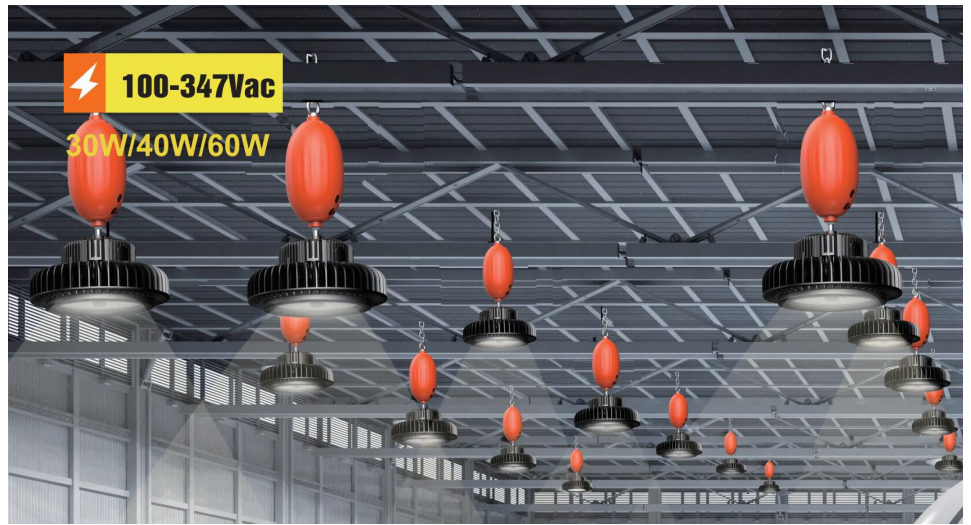
CCT&Power Adjust



- ▶ Emergency LED Driver



### Emergency LED Driver



Input Voltage	Emergency power	Emergency Time
100-347VAC	30	90Minutes
100-347VAC	40	90Minutes
100-347VAC	60	90Minutes

## FEATURES

- ▶ Simple wiring: directly connect to AC INPUT of LED driver.
- ▶ Constant power output 30W/40W/60W.
- ▶ Universal input range, 100-347Vac, 50/60Hz.
- ▶ High output voltage DC 170V .
- ▶ Optimized design for UFO highbay fixture, private mold patent design.
- ▶ Built-in integrated junction box.
- ▶ Protection: over-voltage, short-circuit, over-load, open-circuit.
- ▶ Wireless remote control or non-remote control for emergency test are optional.
- ▶ Comply with UL924 standard and CSA 22.2, No. 141 for USA and Canada.
- ▶ California Energy Commission (CEC) Title 20 with BC compliant.

► Emergency LED Driver

**STYLE 2**



- ▶ Input Voltage:100~240Vac, 50/60Hz
- ▶ Input Current:200mA max.
- ▶ Input Power Rating:12W max.
- ▶ Emergency Power:25W/30W/40W
- ▶ Discharge Time:1H/1.5H/2H/3H
- ▶ Ambient Temp:32~122 F(0~50 C)
- ▶ Warranty:3 Years
- ▶ Battery:Li-ion
- ▶ Weight:3.97 lbs(1.8kg)
- ▶ Recharge Time:36Hrs
- ▶ Output Voltage:170Vdc

► Emergency LED Driver

**STYLE 3**



- ▶ Input Voltage:100~347Vac, 50/60Hz
- ▶ Input Current:200mA max.
- ▶ Input Power Rating:12W
- ▶ Recharge Time:24Hrs
- ▶ Output Voltage:170Vdc
- ▶ Emergency Power:15W/25W/40W
- ▶ Discharge Time:1.5H
- ▶ Battery:Ni-MH or Li-ion
- ▶ Warranty:5 Years
- ▶ Ambient Temp:32~122°F(0~50°C)
- ▶ Weight:4.14 lbs(1.88kg)

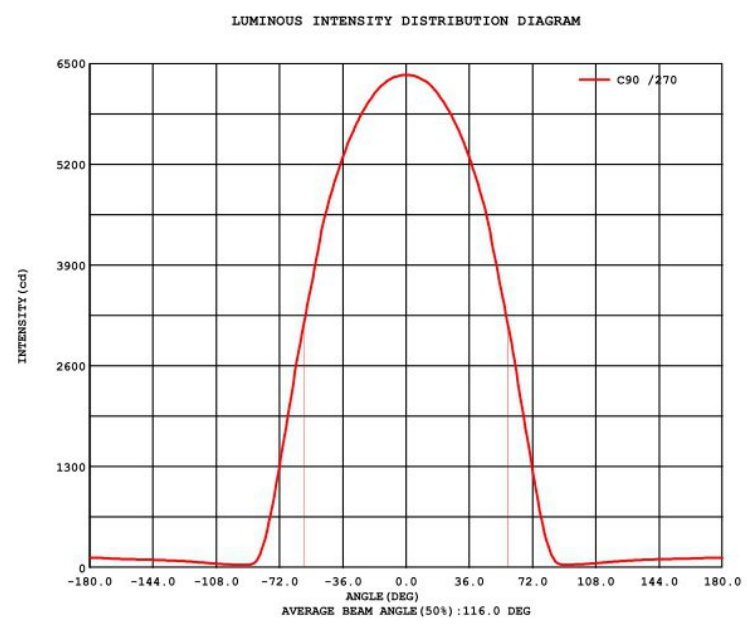
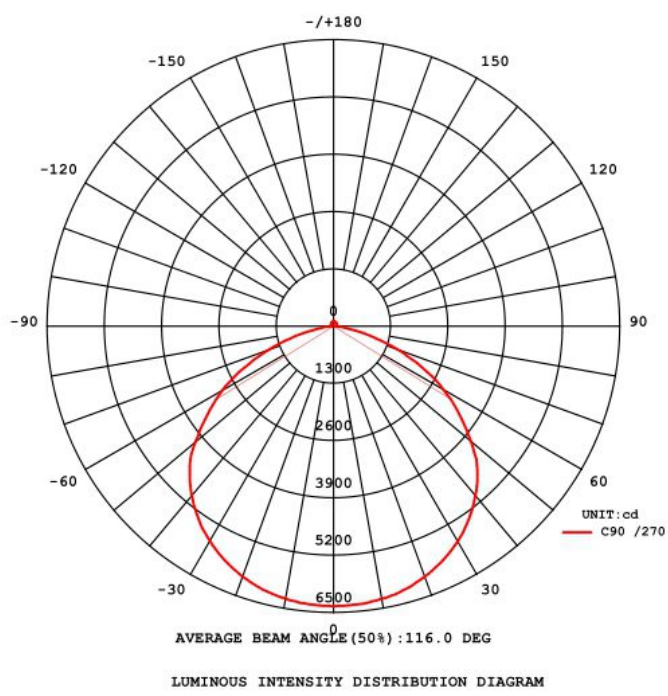
► Emergency LED Driver

**STYLE 4**



- ▶ Input Voltage:100~347Vac,50/60Hz
- ▶ Input Current:200mA max.
- ▶ Recharge Power:12W
- ▶ Output Voltage:170Vdc
- ▶ Emergency Power:25W/40W
- ▶ Recharge Time:24Hrs
- ▶ Discharge Time:1.5H
- ▶ Warranty:5 Years
- ▶ Vaux:12Vdc 0.2A
- ▶ Battery:Li-ion
- ▶ Ambient Temp:32~122°F(0~50°C)
- ▶ Weight:3.96 lbs(1.8kg) max.
- ▶ Surge Protection:Line-Neutral 3KV

# LUMINOUS INTENSITY DISTRIBUTION



# PROJECTS

By using our 100W Highbay Light to replace 300W Metal Halide bulb for warehouse high bay lighting fixtures, the customer is now able to save a lot per month from his electric bill.



Replace  
➔



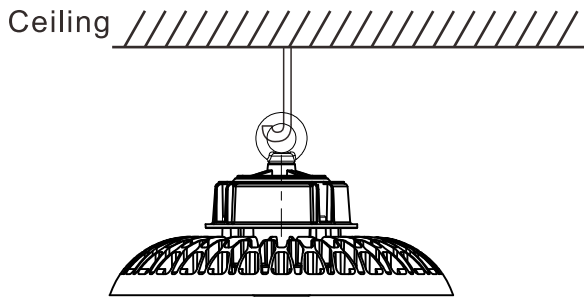
**100W LED = 300W MH**

## Note:

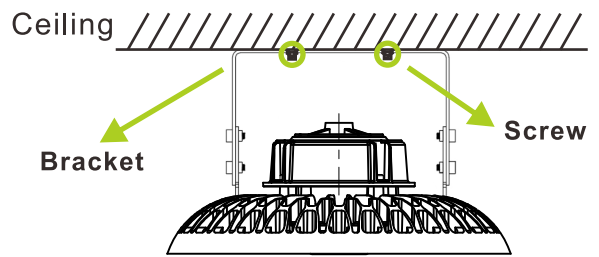
- Don't take the LED lamp apart.
- The LED lamp must work under the right voltage according to the specification.

# INSTALLATION

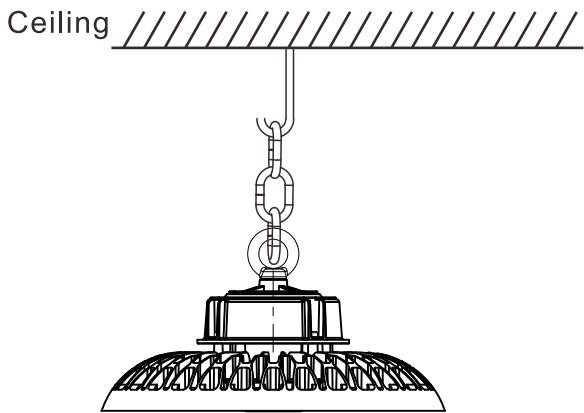
UFO LED Highbay Light has four kinds of installation:



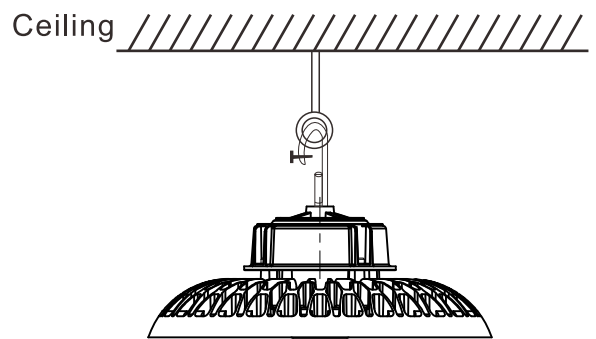
1. The suspension loop



2. Bracket type



3. Suspension chain



4. Hook hanger

# PACKING INFO



Packaging	Carton Size(mm) (L*W*H)	N.W	G.W	Volume weight
1pc/CTN(100W)	360*360*165mm	1.3kg	1.8kg	5.34kg
1pc/CTN(150W)	400*390*190mm	3.4kg	4.12kg	7.21kg
1pc/CTN(200W)	430*430*190mm	3.8kg	4.48kg	8.60kg